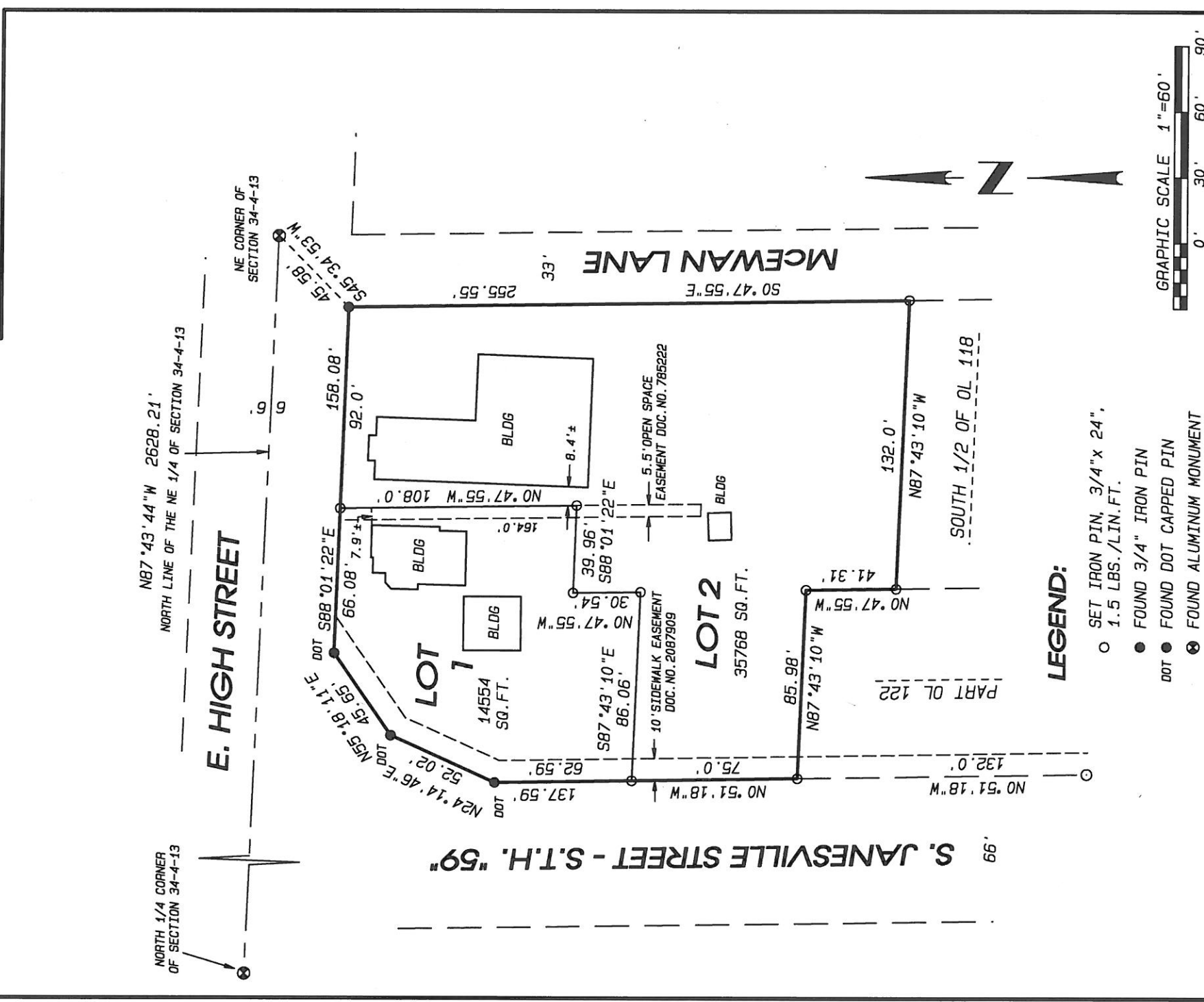


CERTIFIED SURVEY MAP

PART OF OUTLOTS 118, 119, 120, 121 AND 122, ASSESSOR'S PLAT OF THE VILLAGE OF MILTON AND LOCATED IN THE NE 1/4 OF THE NE 1/4 OF SECTION 34, T.4N., R.13E. OF THE 4TH P.M. NOW THE CITY OF MILTON, ROCK COUNTY, WISCONSIN.



LEGEND:

- SET IRON PIN, 3/4" x 24", 1.5 LBS./LIN.FT.
- FOUND 3/4" IRON PIN
- DOT ● FOUND DOT CAPPED PIN
- ⊙ FOUND ALUMINUM MONUMENT

NOTES:

FIELDWORK COMPLETED _____
 ASSUMED N87°43'44"W ALONG THE NORTH LINE OF THE NE 1/4 OF SECTION 34-4-13.

Project No. 118 - 250 For: DREW

SHEET 1 OF 3 SHEETS

• LAND SURVEYING
 • LAND PLANNING
 • CIVIL ENGINEERING

109 N. Milwaukee St.
 Janesville, WI 53548 tel: 608 752-0575
 WWW.COMBSURVEY.COM fax: 608 752-0534